

SURGICAL SUCTION DEVICE

MODEL: NOVELA EXTRACTOR
ORDER NUMBER: 33.1016



PRODUCT FEATURES

General Features

Type and Number of Jars	Polycarbonate Jars
Jar Capacity Options	2x3 L
Input Voltage	220-240 V AC / 50-60 Hz
Flow Rate	60 L/Min
Max. Vacuuming Power	680 mmHg (~90kPa, 0,90 bar) (at sea level)
Max. Noise Level	Max. 55 dB
Foot Switch	✓
Pump	Oil-free type
Filter	7 pcs

Dimensions

Packing Weight	25 kgs
Packing Size (WxLxH)	510x510x960 mm

Accessories Packing Size / Weight 3L; 330x450x210mm/3kg

Classification

Applicable certificates of the product : TS EN 60601-1, EN ISO 10079-1:2015 EN 60601-1-2:2015/A1:2021, EN 60601-1-6:2010

The product is manufactured in line with ISO 10079-1 standard.

Surgical suction units are classified as Class IIa medical devices and CE-certified.

STANDART ACCESSORIES AND SPARE PARTS

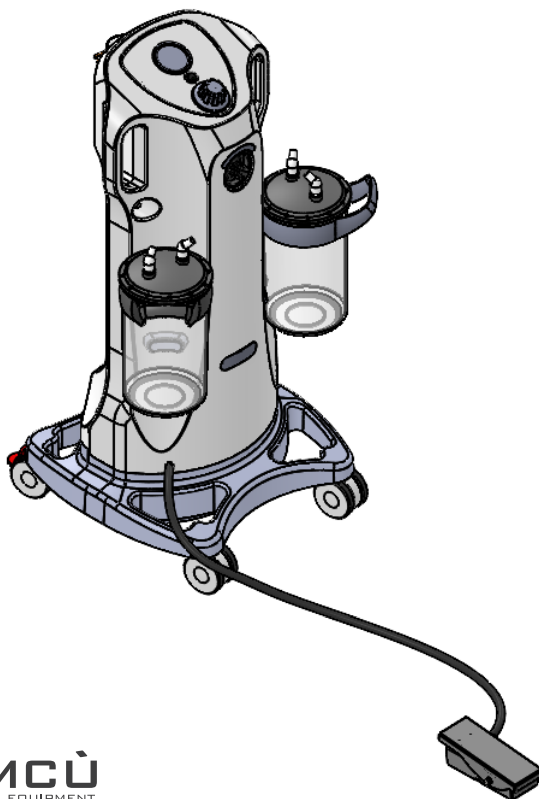
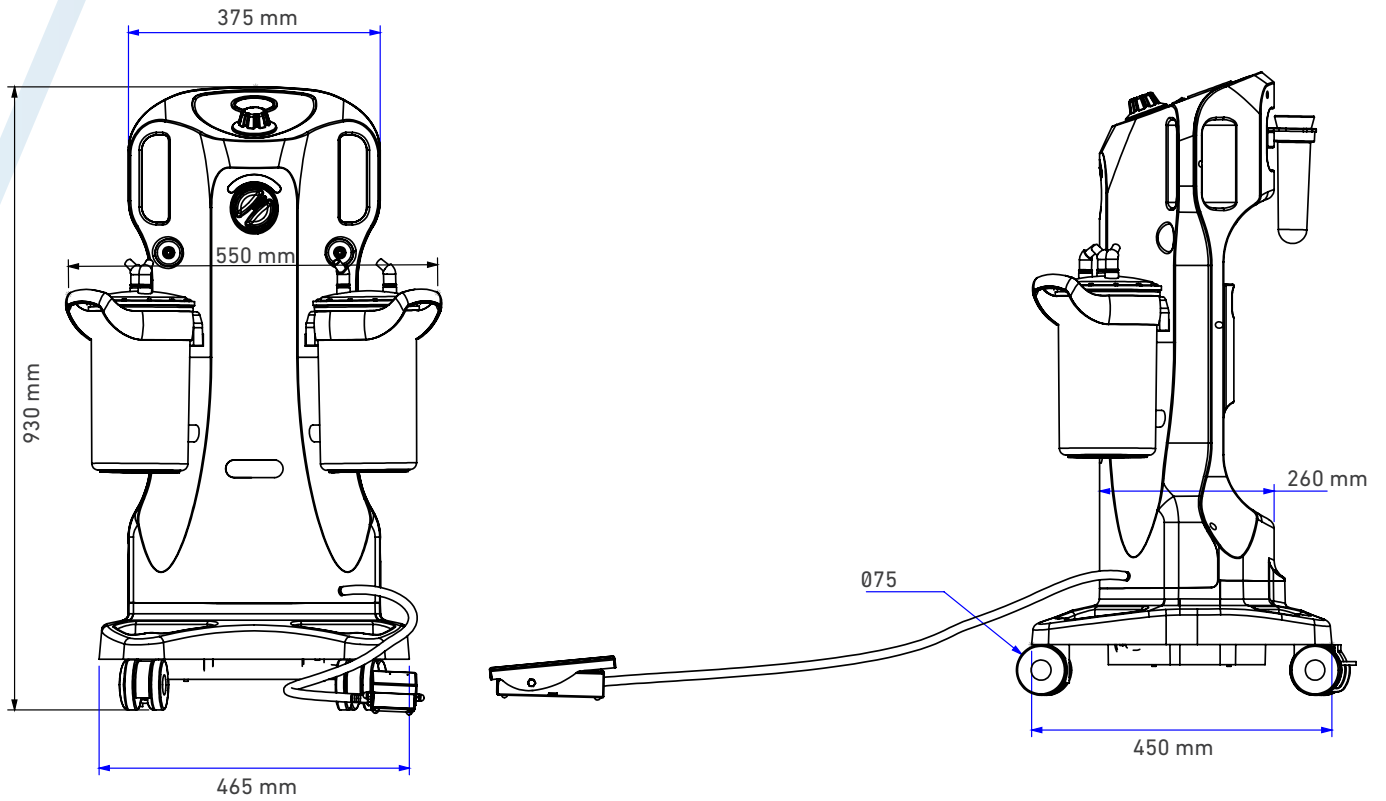
PC Jar 1 pair (includes lid, gasket, overflow valve)
Probe Container and Holder
Hydrophobic Filter 5 pcs
Hose adapter: 2 pcs
Silicone Hose (50 cm) 2 pcs
Connector 2 pcs
Yankuer hose 2 pcs

SURGICAL SUCTION DEVICE

MODEL: NOVELA EXTRACTOR

ORDER NUMBER: 33.1016

TECHNICAL DRAWING



NOTES:

- Units are in "mm"
- Tolerances: ± 25 for metric measurements
 ± 5 for angle measurements